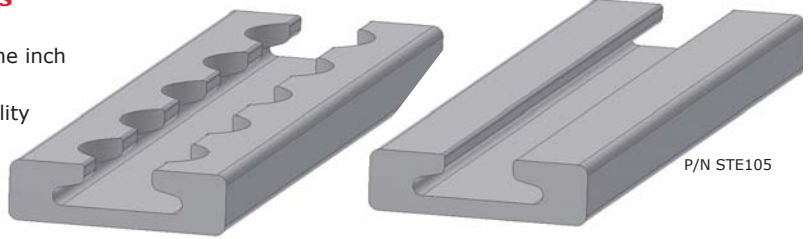


Browline Style Seat Tracks/Cargo Tracks

- Perfect for homebuilt or experimental projects
- Slotted extrusion with 0.785" diameter openings every one inch
- Precision machined and quality controlled
- Aerospace grade 7075-T6511 aluminum with full traceability
- Compatible with common MS33601 cargo tie down and seat stud fittings (see below)



Standard Lengths

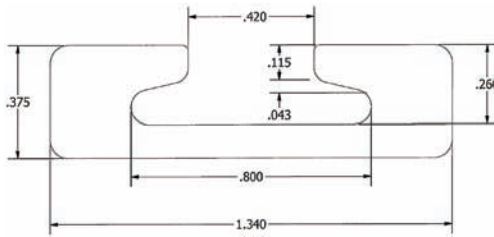
P/N 6656-L (L = the minimum length in inches)
Anodized for corrosion protection.
Available in 6, 12, 18, 24, 36, 48, 72, 96, 120, 144, 160, and 179 inch lengths.

P/N STE105

Slotted extrusion without machined 0.785" diameter openings. Non-anodized. Available by the inch.

Custom Tracks

Custom lengths and machining available. Call for details.



Filler Strip for Browline Style Track

P/N FE200751

- Provides a finished look
- Keeps debris out of the track
- May be cut to length, sold in 25 ft. roll



Browline Style Anchor Plate

P/N 40000-11

- For use with single stud fittings
- Small and low profile, providing damage protection to cargo and baggage
- An ideal way to support single location fastening of nets, straps, or other equipment
- NSN Number 1560-01-286-1030
- Aluminum alloy, anodized

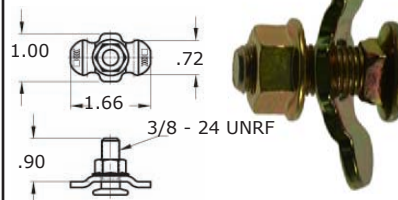
Working load limit:

4000 lbs @ 0° vertical pull
2000 lbs @ 90° horizontal pull



Threaded Single Stud Fitting with Nut for Browline Style Track

P/N FE200744



Specifications

Material: Carbon Steel
Finish: Zinc Plated
Working Load Limit:
5000 lbs @ 0° vertical pull
2000 lbs @ 90° horizontal pull

Chair Leg Stud Quick Release Anchor

P/N MC41528-14

- Use with Browline style track
- Spring loaded fitting snaps securely into place and can be easily moved to different positions.
- Designed to mate with 1" O.D. 0.035" wall tube or a 0.720" O.D. stud.
- 7075 Aluminum



Cargo Tie Down Fittings for Browline Style Track

- Use with Browline style track (McFarlane P/N series 6656) or other MS33601 compatible track - sometimes called L-track
- Perfect for net or strap restraint applications
- Spring loaded fitting snaps securely into place and can be easily moved to different positions



P/N	Description	Figure	A	B	C	D	E	F	0° Vertical Working Load Limit lbs.	90° Horizontal Pull Angle Working Load Limit lbs.
32401	Single Stud Fitting with Ring	1	1.99"	0.93"	1.18"	0.19"	0.63"	1.23"	1333	1000
40340-20	Single Stud Fitting with Ring	1	1.87"	0.87"	1.12"	0.19"	0.71"	1.43"	1000	500
40340-21	Single Stud Fitting with D-Ring	2	2.00"	1.09"		0.19"	0.71"	1.43"	1000	500
47981-10	Double Stud Fitting with Round Ring	3	1.75"	2.32"	2.34"	0.31"	0.76"		10000	5000
47981-11	Double Stud Fitting with Twisted Ring	4	1.56"	2.32"	3.76"	0.27"	0.76"		5000	5000
32505	Triple Stud Fitting without Ring	5	1.12"	0.90"	2.60"				2167	1670
32507	Triple Stud Fitting with Pear Shaped Ring	6	1.12"	0.90"	1.16"	0.25"	4.90"		2000	1670

1 NSN Number 1670-01-243-8877

2 NSN Number 1670-01-261-0567

3 60° Pull angle working load limit = 2000 lbs.

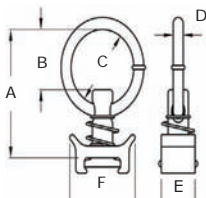


Figure 1

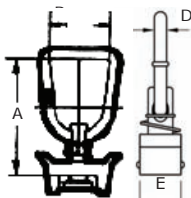


Figure 2

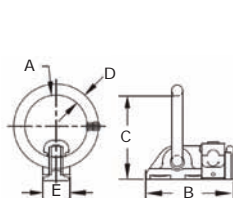


Figure 3

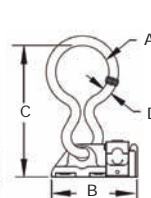


Figure 4

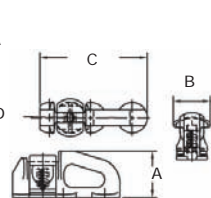


Figure 5

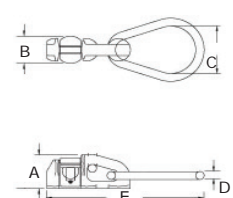
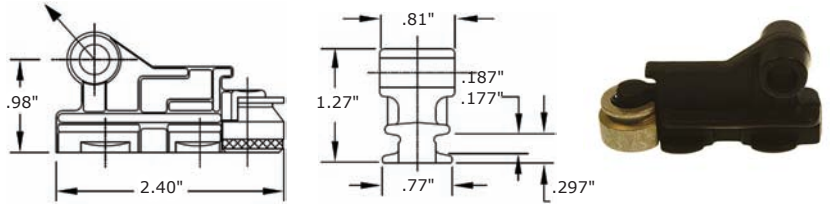


Figure 6

Rear Leg Seat Fitting

P/N 42854-11

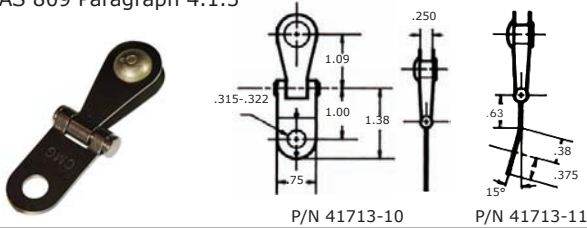
- Compatible with Browline style track
- 8000 lb load capacity at 48° angle from horizontal
- Cad plated with teflon coating
- Weight .24 lb



Seat Belt Shackles

P/N 41713-10 and 41713-11

- High strength, low profile design
- Made especially for today's lightweight seats
- Stainless steel, cad plated
- Meets the load requirements of NAS 809 Paragraph 4.1.3



Cargo Tie Downs

- Clamps to seat rails to provide tie down points to secure cargo
- 4 required per every 100 lbs of cargo
- Anodized aluminum for durability
- FAA-PMA/STC

Note: This product is not to be used as a seat stop

P/N	Color	Aircraft Model Eligibility
TDC-208	Green	Cessna 208, 208A, and 208B
TDP-31	Blue	Piper PA31, PA31-300,-325,-350, PA31P, PA31P-350, PA31-T, PA31-T1,T2,T3



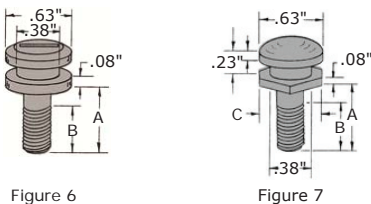
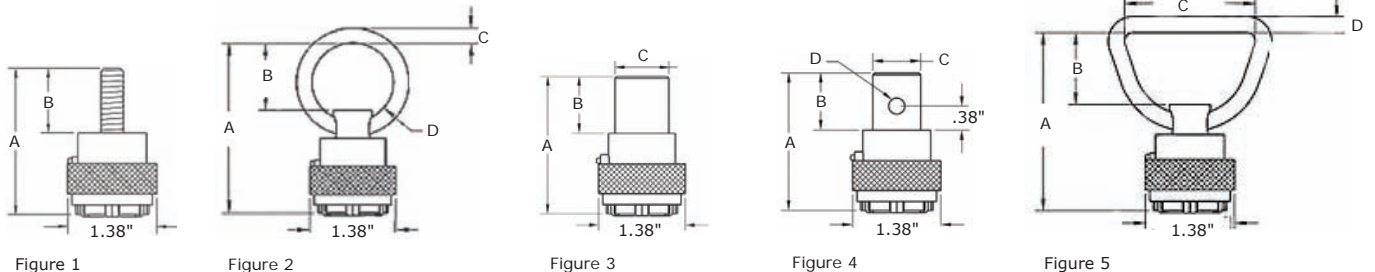
12-Jaw Seat/Cargo Tie Down Quick Disconnect Adapters and Studs (MS22034 style)

- Spring loaded ring locks jaws around stud, and spring loaded lock pin prevents accidental release
- Use with seat cargo studs shown below. Also works with any MS21234, MS21235 and AM7516 style seat/cargo attach fittings



P/N	Description	Figure	A	B	C	D	0° Vertical Breaking Strength lbs.	90° Pull Angle Breaking Strength lbs.
33115	12-Jaw, Threaded Stud, 1" x 3/8-24UNF Threaded Stud	1	2.26"	1.00"			5475	2300
33116	12-Jaw, Threaded Stud, 3/4" x 3/8-24UNF Threaded Stud	1	2.01"	0.75"			5475	2300
32326	12-Jaw, Ring	2	2.85"	1.13"	0.25"	1.31"	5475	2300
32334	12-Jaw, Chair Leg Stud, 0.85"	3	2.16"	0.90"	0.85"		N/A	2300
32336	12-Jaw, Chair Leg Stud, 0.88" with 1/4" Hole	4	2.16"	0.90"	0.88"	0.25"	5475	2300
32340	12-Jaw, Chair Leg Stud, 0.85" with 1/4" Hole	4	2.16"	0.90"	0.85"	0.25"	5475	2300
32343	12-Jaw, D-Ring	5	2.82"	1.10"	2.01"	0.25"	5475	2300
32367	12-Jaw, Chair Leg Stud, 0.75" with 3/8" Hole	4	2.32"	1.06"	0.75"	0.375"	5475	2300
FD4015	Stud, 12-Jaw, 1/4-28 UNF with slot	6	0.63"	0.57"			4000	N/A
FD4015M8	Stud, 12-Jaw, 3/8-24 UNF with hex	7	0.63"	0.57"	0.57"		4000	N/A

- 1 Replaces MS22034-1B
- 2 Replaces MS22034-2
- 3 Replaces MS22034-1
- 4 Replaces MS22034-3



Ankra Interior Cargo Fittings

McFarlane is now a full distributor!
Quantity discounts available
Call or visit mcfarlaneaviation.com
for more information.

