

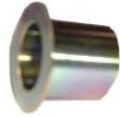
Parts Manufactured by PMA Products, Inc.



CA101-810089-1A
Main Gear Bolt



CA50-810326
Main Strut Upper Bearing



CA101-810024-3
Main Torque Link Bushing



CA3026
Brush Block



CA3044
Brush Block Assembly



CA101-810090-1
Bolt, Beechcraft

CA41413-038
Bushing



CA99-820099
Bearing

Beechcraft

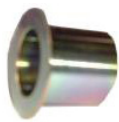
| Description | Part Number | Model |
|-----------------------------------|------------------|---|
| Bearing, Main Strut Upper | CA50-810326 | 1900,1900C,D,F90,99,99A,A99A,B99,C99,100,A100,B100,200,200T,200C,200CT,B200,B200C,CT,T, 300,300LW,B300, B300C |
| Bearing, Nose Gear | CA99-820099 | C90,E90,F90,99,99A,A65,70,B80,A99A,B99,C99,100,A100,B100,200,200T,200C,200CT,B200, B200C, B200CT,B200T |
| Bolt | CA101-810089-1 | 1900,1900C,1900D,F90,C99,200,200T,200C,200CT,B200,B200C,B200CT,B200T |
| Bolt, Main Gear | CA101-810090-3 | 1900,1900C,F90,C99,200,200T,200C,200CT,B200,B200C,B200CT,B200T |
| Bolt, Main Gear Drag Brace | CA101-810090-1 | 1900,1900C,1900D |
| | CA101-810145-1 | |
| | CA101-810146-1 | 300,300LW,B300,B300C |
| Bolt, Nose Gear | CA90-820011-1 | C90,E90,F90,99,99A,A99A,B99,C99,100,A100,B100,200,200T,200C,200CT,B200,B200C, B200CT, B200T, 1900, 1900C,1900D |
| | CA101-810014-3 | F90,99,99A,A99A,B99,C99,100,A100,B100,200,200C,B200,B200C,B200CT,B200T |
| | CA105739X-YN1437 | 1900,1900C,1900D |
| | CA105740X-YK0563 | 99,99A,A99A,B99 |
| | CA105740X-YN0520 | F90,99,99A,A99A,B99,C99,A100,B100 |
| | CA115-610019 | 99,99A,A99A,B99,C99,100,A100,B100 |
| Bushing | CA115-810066-3 | F90,99,99A,A99A,B99,C99,100,A100,B100,200,200T,200C,200CT,B200,B200C,B200CT, B200T,300,300LW,B300, B300C,1900,1900C,1900D |
| | CA50-524476-1 | 65,80,A80,88,90,A90,B90,C90,E90 |
| | CA50-524476-3 | |
| | CA99-810064-1 | A100,B100,100,B99,200,200T,200C,200CT,F90 |
| | CA99-810064-3 | 1900,1900C,1900D,F90,C99,B200,B200C,B200CT,B200T,300,300LW,B300,B300C |
| Bushing, Drag Link | CA90-820010-1 | C90 |
| Bushing, Gear Door | CA105740X-ZU0260 | F90,99,99A,A99,A99A,B99,C99,100,A100,B100,200,200C,B200,B200C |
| | CA99-810060-1 | F90,99,99A,A99A,B99,C99,A100,B100 |
| Bushing, Landing Gear | CA101-810014-1 | F90,99,99A,A99A,B99,C99,100,A100,B100,200,200T,200C,200CT,B200,B200C,B200T,200CT |
| | CA99-810066-1 | 1900,1900C,1900D,C90,E90,F90,99,99A,A99A,B99,C99,100,A100,B100,200,200T,200C,200CT,B200,B200C,B200CT, B200T,300,300LW, B300,B300C |
| Bushing, Main Drag Link Center | CA114-810038-1 | 1900,1900C,1900D |
| | CA114-810042-1 | |
| | CA114-810049-3 | 1900,1900C,1900D |
| Bushing, Main Gear | CA115-810064-1 | F90,99,99A,A99A,B99,A100,B100,200,200T,200C |
| Bushing, Main Torque Link Center | CA105740X-YA1625 | |
| | CA105740X-YN0677 | 1900,1900C,1900D,200,200T,200C,200CT,B200,B200C,B200CT,B200T,300,300LW,B300,B300C |
| Bushing, Main Torque Link in Gear | CA101-810024-3 | 1900C,1900D |
| Bushing, Nose Attach Lug | CA114-820113-1 | 1900,1900C,1900D |
| Bushing, Nose Steering | CA105740X-ZV0312 | A90,B90,C90,C90A,E90,F90,99,99A,A99A,B99,C99,200,200T,200CT,A200,A200C,B200,B200C,B200CT,B200T |
| | CA105740X-YA0630 | 1900,1900C,1900D,90,A90,B90,C90,E90,F90,99,99A,A99A,B99,C99,100,A100,B100,200,200C, 200T,200CT,B200, B200T,B200C,B200CT,300,300LW,B300,B300C |
| Bushing, Nose Torque Link Center | CA105740X-YN0625 | 1900,1900C,1900D,300,300LW,B300,B300C,90,A90,B90,C90,C99,E90,F90,99,99A,A99A,B99, 100,A100,B100, 200,200T,200C,200CT,B200,B200C,B200CT,B200T |
| | CA90-810019-1 | C90,E90,F90,C99,100,A100,B100,200,200T,200C,200CT,B200,B200C,B200CT,B200T,300,300LW,B300, B300C,1900,1900C,1900D |
| Bushing Nose Upper Torque Link | CA50-810034 | 1900,1900C,1900D,300,300LW,B300,B300C,90,99,99A,A90,A99A,B90,B99,C90,C99,E90,F90,100,A100, B100, 200,200T,200C,200CT,B200,B200C,B200CT,B200T |
| Bushing, Steering Roller | CA114-820062-1 | 1900,1900C,1900D |
| | CA45-815013 | 33,35,36,55,58 |
| Bushing, Torque Link | CA101-810024-5 | 1900C,1900D |
| | CA105740X-YD0160 | 99,99A,A99A,B99,C99 |
| Carbon Block | CA3026 | A90,B90,C90,C90A,E90,F90,99,99A,A99A,B99,C99,100,A100,200,200T,200C,200CT,B200,B200C,B200CT,B200T, 300,300LW,B300,B300C,1900,1900C,1900D |
| Carbon Block Assembly | CA3044 | A90,B90,C90,E90,F90,99,99A,A99A,B99,C99,A100,A100,200,200T,200C,200CT,B200,B200C,B200CT, B200T, 300,300LW,B300,B300C,1900,1900C,1900D |
| Drag Leg Hook Pins | CA50-810343-5 | F90 S/N LA-2 & On, 99,99A,A99A,B99,C99 S/N U-1 thru U-49,U-51 thru U-164,100,A100,B100 |
| | CA50-810343-7 | 200 S/N BB-2 thru BB-733, BB-735 thru BB-792, BB-794 thru BB-828, BB-830 thru BB-853, BB-871 thru BB-873, BB-892, BB-893 and BB-912, 200T S/N BT-1 thru BT-22, 200C S/N BL-1 thru BL-200CT S/N BN-1, B200 S/N BB-734, BB-793, BB-829, BB-854 thru BB-870, BB-874 B-891, BB-894 thru BB-911, BB-913 thru BB-1157, BB-1159 thru BB-1166, BB1168 thru BB-1192, B200T S/N BT-23 thru B5.235T-27, BT29,BT30,B200C S/N BL-37 thru BL-72, B200CT S/N BN-2-BN-4 |
| Filter & Gasket Kit | CA42370 | 55,A55,B55,C55,D55,E55,56TC,A56TC,58,58P,58TC,60,A60,B60,A65,70,B80,E95,C90,E90,F90,100,A100,200,200T, 200C,99,99A,A99A,B99,C99 |
| Fuel Pump | CA476284E-1 | 55,A55,B55,C55,D55,E55,56TC,A56TC,58,58P,58TC,60,A60,B60,A65,70,B80,E95,C90,E90,F90,100,A100,200,200T, 200C,99,99A,A99A,B99,C99 |
| Nose Attach Lug | CA114-820113-1 | 1900,1900C,1900D |
| Seal, Drain Valve | CACCA1269 | |
| | CACCA1319 | A55,B55,B55A,C55,C55A,D55,D55A,E55,E55A,58,58A,95-55 (not recommended for use with autogas) |
| Seal, Fuel Cap | CA38241 | 99,99A,A99A,B99,C99,100,A100,B100,200,200T,200C,200CT,B200,B200C,B200CT ,B200T, B300, B300C, 1900, 1900C,1900D |
| | CA457-98 | E90,F90,99,99A,A99A,B99,C99,100,A100,B100,B200,B200C,B200CT,B200T,200,200T,200C,200CT |
| | CA100-530448-5 | C90,C90A,C90(SE),E90,F90,A100,B100,200,200T,200C,200CT,B200,B200C,B200CT |
| Seat Foot | CA100-530448-7 | C90,C90A,E90,F90,A100,B100,200,200T,200C,200CT,B200,B200C,B200CT |
| | CA50-534436-5 | 65,80,A80,88,90,A90,99,99A,A99A,B90,B99,C99,100,A100,B100 |
| Stall Switch Assembly | CA450-742N | 35-33,35-A33,35-B33,35-C33,35-C33A,E33,E33A,F33,F33A,F33C,G33,H35,J35,K35,M35,N35,P35,S35, V35,V35A, V35B,36,A36,C35,D35,E35,F35,G35 |
| Static Discharger | ESD-3 | Various Models - No FAA-PMA Approval |
| Switch, Mic | CA601-4300 | F90,C99,100,A100,B100,200,200T,200C,200CT,300,300LW,B300,B300C |
| | CA99-340253-1 | 1900,1900C,B200,B200C,B200CT,B200T |
| Torque Link Pin | CA101-810025-1 | 200, 300 and 1900 Series |



CA101-810089-1A
Main Gear Bolt



CA50-810326
Main Strut Upper Bearing



CA101-810024-3
Main Torque Link Bushing



CA3026
Brush Block



CA3044
Brush Block Assembly



CA101-810090-1
Bolt, Beechcraft

CA41413-038
Bushing



CA99-820099
Bearing

Continued from previous page

Beechcraft

| Description | Part Number | Model |
|---------------------------|---------------|---|
| Upper Bearing, Main Strut | CA50-810326 | F90,99,99A,A99A,B99,C99,100,A100,B100,200,200T,200C,200CT,B200,B200C,B200CT,B200T,300LW,B300,B300C,300,1900,1900C,1900D |
| Washer | CA50-105000-3 | C90,B200,B200C,B200T,300LW,300,B300,B300C,1900,1900C |
| Washer, Thrust | CA115-810074 | F90,99,99A,A99A,B99,100,A100,B100,200,200T,200C,200CT,B200,B200C,B200CT,B200T |
| Wiper Blade | CA50-384082 | A65,70,B80,C90,E90,F90,99,99A,A99A,B99,C99,100,A100,B100,200,200T,200C,200CT,B200,B200C, B200CT,B200T,300LW,B300,B300C,300,1900,1900C,1900D |
| Yoke | CA3025 | A90,B90,C90,E90,F90,99,99A,A99A,B99,C90A,C99,100,A100,200,200T,200C,200CT, B200,B200C, B200CT,B200T,300,300LW,B300,B300C,1900,1900C,1900D |

Cessna

| | | |
|---------------------|--------------|---|
| Filter & Gasket Kit | CA42370 | 310Q, 310R, 335, 340, 340A, 401B, 402B, 402C, 404, 414, 414A, 421B, 425, 441, 525, 560, 650 |
| Gasket, Fuel Bowl | CAB3-11-1 | 310,320,335,336,337,340,401,402,404,411,414,421 |
| Pump, Fuel/Alcohol | CA6508092-1A | 310Q,310R,335,340,340A,401B,402B,402C,404,414,414A,421B,421C,425,441,500, 525,550,560,650 |
| Seal, Fuel Cap | CA38241 | 525,650,680,750 |

Dehavilland

| | | |
|-------------------|--------|------|
| Carbon Block Assy | CA4731 | HC-6 |
|-------------------|--------|------|

Embraer

| | | |
|--------------|----------------|-----|
| Back up Ring | CABDS3115-026C | 120 |
|--------------|----------------|-----|

Lear

| | | |
|-----------------|-------------|-------------------------------|
| Bolt, Main Gear | CA2341114-3 | 24,25,31,35,36,55,60 |
| Bushing | CA2341120-1 | 23,24,25,28,29,31,35,36,55,60 |

McCaughey Propellers

| | | |
|--------------|---------|---|
| Carbon Block | CAB5121 | This part number is eligible on all make & model aircraft with the following propellers installed: 3GFR34C701,702,703,4HFR34C754,762,766,768,771,4JFR34C758,5JFR36C1003 |
|--------------|---------|---|

Mooney

| | | |
|---------------------------|--------------|----------------|
| Seal, Fuel Cap | CA38241 | M20C,D,E,F,G,J |
| Transducer, Fuel Pressure | CA880007-501 | M20J |
| Transducer, Oil Pressure | CA880008-501 | M20J |

Piper

| | | |
|--|--------------|--|
| Aileron Rod | CA62766-000 | PA28-140,150,160,180,235, PA28R-180,200 |
| Barrel, Trim | CA63530-100 | PA28 Series, PA32-260,300,301,301T,PA32R-300,301,301T PA28-201T S/N 28-7921001 to 28-7921095 |
| Bearing | CA96596-002 | PA34-200,200T,220T |
| Bearing, Flap | CA67026-011 | PA28R-200,201,201T,PA28RT-201,201T,PA32R-300,301,301T,PA32RT,PA44-180,180T |
| Bearing, Main Gear | CA452-387 | PA28-140,150,151,160,161,180,181,235,236,201T,PA28R-180,200,201,201T,PA28RT-201,201T,PA32-260,300,301,301T,PA32R-300,301,301T,PA32RT,PA34-200,200T,220T,PA44-180,PA46-310P,350P |
| Bearing, Rod End | CA452-575 | PA24-180,250,260,400,PA28R-180,200,201,201T,PA28RT-201,201T,PA30,PA32R-300,301,301T,PA32RT,PA34-200,200T,220T,PA39,PA44-180 |
| Bearing, Rod End | CA452-334A | PA28-140,150,151,160,161,180,181,235,236,201T,PA28R-180,200,201,201T,PA28RT-201,201T,PA32-260,300,301,301T,PA32R-300,301,301T,PA32RT-300,300T,PA34-200,200T,220T,PA44-180,PA46-310P,350P |
| Bearing, Rod End | CA452-335A | PA23-150,160,235,250,PA28-140,150,151,160,161,180,181,235,236,201T,PA28R-180,200,201,201T,PA28RT-201,201T,PA31P,PA31P-350,PA31T1,2,PA32-260,300,301,301T,PA32R-300,301,301T,PA32RT-300,300T,PA34-200,200T,220T,PA42,PA42-720,1000,PA44-180,PA46-310,350P |
| Bearing, Rod End | CA452-336A | PA28-140,150,151,160,161,180,181,235,236,201T,PA28R-180,200,201,201T,PA28RT-201,201T,PA32-260,300,301,301T,PA32R-300,301,301T,PA32RT-300,300T,PA34-200,200T,220T,PA44-180 |
| Bearing, Rod End | CA452-368 | PA28R-180,200,201,201T,PA28RT-201,201T,PA32R-300,301,301T,PA32RT,PA34-200,200T |
| Bearing, Rod End | CA452-412 | PA24-180,250,260,400,PA31-300,310,325,350,PA42,PA42-720,1000,PA31P-350,PA31P,PA31T,1,2,PA30,PA31-350-T1020,PA39,PA46-301P |
| Bearing, Rod End | CA452-439 | PA23-235,250,250(6),PA28RT-201,201T,PA31-300,310,325,350,PA31-350-T1020,PA31T-1,2,PA31P,PA31P-350,PA32RT,PA42,PA42-720,1000,PA44-180 |
| Bearing, Rod End | CA452-860A | PA46-310P,350P |
| Bearing, Rod End | CA452-584 | PA28-151,161,PA28R-180,200,201,201T,PA32R-300,301,301T,PA32RT-300T,PA34-200T,220T,PA36-285, 300,375,PA44-180 |
| Bearing, Stabilator Hinge | CA452-394 | PA28-151,161,181,236,201T,PA28R-201,201T,PA32-260,300,301,301T,PA32R-300,301,301T |
| Bearing, Stabilator Hinge | CA452-538 | PA28RT-201,201T,PA32RT,PA34-200,200T,220T,PA44-180 |
| Bulkhead Spinner Forward | CA87325-010 | PA28-161 |
| Bulkhead Spinner Forward | W35323-012 | PA28-151 |
| Bulkhead, Spinner Rear | W587-330 | PA28-151 |
| Bumper, Nose Gear Torque Link Ext | CA79072-000 | PA28-140,150,151,160,161,180,181,235,236,PA32-260,300,301,301T |
| Bushing, Main Gear Torque Link | CA20737-040 | PA31-300,325,350,PA31-350-T1020,PA31P,PA31P-,350,PA31T,1,2,PA42,PA42-720,1000 |
| Bushing, Nose Gear Torque Link Lower | CA453-903 | PA31P-350 |
| Bushing, Main Gear Retract Truss Act. Attachment | CA63900-089 | PA28R-180,200,201,201T,PA28RT-201,201T,PA32R-300,301,301T,PA32RT,PA34-200T,220T,PA44-180 |
| Bushing, Outboard Flap Track | CA86102-104 | PA31-300,310,325,350,PA31P,PA31P-350,PA31T,1,2 |
| Bushing, Center Flap Track | CA86102-105 | PA31-300,310,325,350,PA31P,PA31P-350,PA31T,1,2 |
| Bushing, Inboard Flap Track | CA86102-106 | PA31-300,310,325,350,PA31P,PA31P-350,PA31T,1,2 |
| Bushing, Aileron Center Hinge | CA95061-108 | PA28-151,161 |
| Bushing, Nose Gear Torque Link Upper | NAS75-5-011 | PA31-300,PA31-350,PA31-350-T1020,PA31P,PA31P-T1040,PA42-720,1000 |
| Bushing, Main Gear Torque Link Upper | NAS75-6-011 | PA31-300,PA31-350,PA31-350-T1020,PA31P,PA31P-350,PA31T,1,2,3-T1040,PA42-720,1000 |
| Bushing, Main Gear Torque Link Center | NAS75-7-011 | PA31-300,PA31T-1,2,3-T1040,PA31P,PA31P-350,PA31-350-T1020,PA42-720,1000 |
| Bushing, Nose Gear Retract Brace Upper Attach | NAS75-7-014 | PA31 |
| Bushing, Stabilator Trim Linkage | NAS76A3-004 | |
| Bushing, Stabilator Trim Linkage | NAS76A3-019 | PA34-200,200T,220T |
| Bushing, Stabilator Trim Linkage | NAS76A3-023 | |
| Bushing, Main Gear Attach Trunnion | NAS77-10-094 | PA31-300,PA31-350,PA31-350-T1020,PA31P,PA31P-350,PA31T-1,2,3-T1040 |
| Bushing, Main Gear Retract Brace Upper Attach | NAS77-18-050 | PA31P-350,PA42-720,1000 |
| Bushing, Nose Gear Torque Link Center | NAS77-4-042 | PA31T-1,2,3-T1040,PA31P,PA31P-350,PA31-350-T1020,PA42-720,1000 |
| Bushing, Elevator Tab Hinge Assy | NAS77-5-019 | PA31-300,350,T1020,PA31P-350,PA31T-1,2,3-T1040 |
| Bushing, Nose Gear Torque Link Upper | NAS77-5-042 | PA31-300,PA31-350,PA31-350-T1020,PA31P,PA31P-350,PA31T,1,2,3-T1040,PA42-720,1000 |
| Bushing, Main Gear Torque Link Center | NAS77-7-035 | PA31-300,PA31-350,PA31-350-T1020,PA31P,PA31P-T1040,PA42-720,1000 |

Approved for all S/Ns including S/N 500-0001 thru 500-0040 incorporating SB30-1, and S/N 500-0001 thru 500-0213 incorporating SB21-9.

Continues on next page



CAB5121
Carbon Block



CA50-810326
Main Strut
Upper Bearing



CA50-384082
Wiper Blade Refill



CA3025
Yoke



CA115-810074
Thrust Washer



CA476284E
Fuel Pump



CA601-4300
Microphone Switch



ESD-3
Static Wick



CA880007-501
Fuel Pressure Transducer

Continued from previous page

Piper

| Description | Part Number | Model |
|--|------------------------------|--|
| Bushing, Nose Gear Retract Link to Brace Attachment | NAS777-7-038 | PA31-300,PA31-350,PA31-350-T1020,PA31P,PA31P-350,PA31T,1,2,3-T1040,PA42-720,1000 |
| Bushing, Nose Gear Retract Brace Upper Attach | NAS777-7-040 | PA31-300,PA31-350,PA31-350-T1020,PA31P,PA31P-350,PA31T,1,2,3-T1040,PA42-720,1000 |
| Bushing, Nose Gear Retract Link to Brace Attach | NAS777-7-068 | PA31-300,PA31-350,PA31-350-T1020,PA31P-350,PA31T,1,2,3-T1040,PA42-720,1000 |
| Bushing, Main Gear Retract Brace Upper Attach | NAS77-8-038 | PA31P-350 |
| Bushing, Main Gear, Link to Strut Attach | NAS77-8-044 | PA31-300,PA31-350,PA31-350-T1020,PA31P,PA31P-350,PA31T-1 |
| Bushing, Main Gear Retract Brace Upper Attach | NAS77-8-084 | PA31-300,PA31-350,PA31-350-T1020,PA31P,PA31P-350,PA31T-1 |
| Bushing, Main Gear Retract Link to Brace Attach | NAS77-8-072 | PA31P-350 |
| Bushing, Cabin Door Mechanism | CA20737-044 CA41413-041 | PA31-300,310,325,350,PA31-350-T1020 |
| Bushing, Flap Hinge, Center and Outboard | CA63900-019 | PA28-140,150,160,180,235,PA28R-180,200,201,201T,PA28RT-201,201T,PA32-260,300,301,301T, PA32R-300,301,301T,PA32R-300,301,301T,PA32-200,200T,220T,PA44-180 |
| Bushing, Flap Track Inboard, Outboard, Center | CA41413-005 | PA31-300,310,350,PA31P,PA31P-350,PA31T-1,2 |
| Bushing, Main Gear Housing Attach | CA20737-023 | PA31-300,310,325,350,PA31-350-T1020,PA31P,PA31P-350,PA31T,2 |
| Bushing, Main Gear Retract Brace Upper Attach | CA14843-016 | PA24-180,250,260,400,PA28R-180,200,201,201T,PA30,PA32R-301,301T,PA32-300,PA32RT,PA34-200,200T,PA39 |
| Bushing, Nose Gear Retract Link to Brace Attach | CA14843-018 | PA24-180,250,260,400,PA30,PA39 |
| Bushing, Main Gear Side Brace Stud Brace Attach | CA65003-041 | PA28RT-201,201T,PA32R-301,301T,PA34-200,200T,PA44-180 |
| Bushing, Main Gear Brace to Link Attach | CA65003-044 | PA28R-180,200,201,201T,PA28RT-201,201T,PA32R-300,301,301T,PA32RT,PA34-200,200T,PA44 |
| Bushing, Main Gear Side Brace Stud to Wing Attach | CA67026-012 | PA34-200T,PA44-180 |
| Bushing, Main Gear Torque Link Lower | CA43256-002 | PA31P,PA31P-350,PA31-300,310,325,350,PA31-350-T1020,PA31T,1,2,PA42-720,1000,PA42 |
| Bushing, Main Gear Housing Attach | CA43256-005 | PA31P-350,PA31-300,310,325,350,PA31-350-T1020,PA31T,1,2 |
| Bushing, Nose Wheel Steering Arm Inner | CA63900-109 | PA28R-180,200,201,PA28RT-201,PA32R-300,301,301T,PA32RT |
| Bushing, Nose Wheel Steering Arm Outer | CA63900-122 | PA28R-180,200,201,PA28RT-201,PA32R-300,301,301T,PA32RT |
| Bushing, Nose Gear Retract Link to Housing Attach | CA65003-046 | PA28R-180,200 |
| Bushing, Nose Gear Retract Brace RH Upper Attach | CA95061-133 | PA32R-300,301,301T,PA32RT-300,300T |
| Bushing, Nose Gear Retract Brace Upper Attach | CA65003-045 | PA28R-180,200,201,201T,PA28RT-201,201T,PA32R-300,301,301T,PA44-180 |
| Bushing, Nose Gear Housing Top and Bottom | CA40250-002 | PA31-300,310,325,350,PA31-350-T1020,PA31P,PA31P-350,PA31T-1,2,PA42,PA42-720,1000 |
| Bushing, Main Gear Torque Link Upper | CA43256-006 | PA23-235,250,250(6),PA31P, PA31P-350,PA31-300,310,325,350,PA31-350-T1020,PA31T-1,2,3, T1040,PA42,PA42-720,1000 |
| Bushing, Nose Gear Retract Idler to Link Attach | CA20737-032 | PA31-300,310,325,350,PA31P,PA31P-350,PA31T-1,2,PA42,PA42-720,1000 |
| Bushing, Seat Roller | CA41413-038 | PA23-235,250,PA24-260,PA25-150,235,PA31-300,310,325,350,T1020,PA31P,PA31P-350,PA31T-1,2, PA30,PA39,PA42-720,1000 |
| Bushing, Nose Gear Steering Arm Outer | CA14976-102 | PA30,PA31-300,310,325,350,PA31-350-T1020,PA39 |
| Bushing, Main Gear Torque Link Spacer Upper & Lower | CA63310-000 | PA28-140,150,151,160,161,180,181,235,236,201T,PA32-260,300,301,301T |
| Bushing, Main or Nose Torque Link Lower Attach | CA67026-007 | PA28R-180,200,PA28RT-201,201T,PA32R-300,301,301T,PA32RT,PA34-200,200T,220T,PA44-180, PA46-310P,350P |
| Bushing, Nose Gear Torque Link Center | CA77780-005 | PA38 |
| Capacitor Assembly, Alternator Output | CA63897-006 | PA28-140,151,180,181,R-200,RT-201,RT-201T, PA32-260,R-300,RT-300,301,R301,301T |
| Fastener, Fuel Cap Cover Door 1/2 Turn | CA26246-000 | PA24-180,250,260,PA30,PA32-260,300,301,PA32R-300,301,PA32RT-300,PA39 |
| Filter & Gasket Kit for Bendix Style Electric Fuel Pump | CA42370 | PA23,PA23-160,250,250(6),PA24,PA24-250,260,PA28-140,151,161,150,160,180,181,PA28-235,236, PA32-260, PA38-112,PA44-180 |
| Fuel Cap, Thermos Type | CA16097N | PA23-235,250 |
| | CA17672N | PA23, PA23-160 |
| | CA27221N | PA24-180,250,260,400,PA30,PA39 |
| Fuel Cap Gasket | CA66815-000A | PA28-140,150,151,160,161,180,181,201,235,236,201T,PA28R-180,200,PA28RT-201,201T,PA32-260, 300,301,301T,PA32R-300,301,301T,PA32RT-300,300T,PA34-200,220T,PA38-112,PA44-180,180T |
| Fuel Pump, Electric | CA35328-800E CA65628-800E | PA23,PA23-160,250,250(6),PA24,PA24-250,260,PA28-140,151,161,150,160,180,181,PA38-112 PA28-235,236,PA32-260,PA44-180 |
| Gasket, Fuel Strainer (not recommended for use with autogas) | CA462-049 | PA28-140,150,151,160,161,180,181,236,201T,PA28R-180,200,201,201T,PA28RT-201,201T,PA38 |
| Gasket, Fuel Strainer | CA751-871 | PA24-400,PA28-235,PA32-260,300,PA30,PA39 |
| Hinge, Aileron | 62371-108 | PA28-140,150,160,180,181,235,236,201T,PA28R-180,200,201,201T,PA28RT-201,201T,PA32-260, 300, PA32RT-300,300T,PA34-200 |
| | CA35636-100 | PA28-151,161,181,PA28R-201,201T,PA28-236,201T,PA28RT-201,201T |
| Hinge Pin, Stabilator Tab Outboard | CA62002-002 | PA28-140,151,151,160,161,180,181,201T,235,236,PA28R-180,200,201,201T,PA28RT-201,201T, PA32-260,300,301,301T,PA32R-300,301,301T,PA32RT-300,300T,PA44-180,180T |
| Hinge Pin, Stabilator Tab Center | CA62002-003 | PA28-140,151,151,160,161,180,181,201T,235,236,PA28R-180,200,201,201T,PA28RT-201,201T, PA32-260,300,301,301T,PA32R-300,301,301T,PA32RT-300,300T,PA34-200,220T,PA44-180,180T |
| Hinge Pin, Stabilator Tab Inboard | CA62002-004 | PA28-140,151,151,160,161,180,181,201T,235,236,PA28R-180,200,201,201T,PA28RT-201,201T, PA32-260,300,301,301T,PA32R-300,301,301T,PA32RT-300,300T,PA34-200,220T,PA44-180,180T |
| Hinge, Tab, Stabilator Outboard | CA63560-002 | PA28,PA28R,PA32,PA32R |
| Hinge, Tab, Stabilator Inboard and Center | CA63560-003 | PA28-140,150,151,160,161,180,181,235,236,201T,PA28R-180,200,201,201T,PA32,PA32R |
| Hinge, Tab, Stabilator Half | CA95864-002 | PA34-200,200T,220T |
| | CA95866-002 | PA34-200,200T,220T |
| Nose Wheel Axle | CA31797-000 | PA23-150,160,250,250(6),PA31-300,310,325 S/N 31-5 to 31-7812120 W/out 763-981 installed |
| Pitot Heater Element | CA464-356 | PA28-151,161 |
| | CA464-357 | |
| | CA464-440 | |
| | CA464-441 | PA28-161 |
| Quad Ring, Main Gear Strut | CA484-769 | PA28-140,150,151,160,161,180,181,235,236,201T,PA32,PA32-260,300,301,301T |
| Quad Ring, Nose Gear Strut | CA484-770 | PA28-140,150,151,160,161,180,181,235,236,PA32-260,300,301,301T |
| Ring Scraper, Main Gear Strut | MS28776M2-18 | PA28-140,150,151,161,180,181,235,236,PA32-260,300 |
| Seat Roller CA18698-000 (measures 0.42") CA87332-002 (measures 0.62") | CA18698-000 CA87332-002 | PA28-140,150,151,160,161,180,181,235,236,PA28R-180,200,PA32-260,300,301,301T,PA32R-300,301, 301T,PA32RT,PA34-200,200T,220T,PA46-310P,350P |

Continues on next page



CA452-575
Landing Gear Bushing



W35323-012
Front Bulkhead
Spinner



CA452-368
Rod End



NAS77-10-94
Bushing



CA452-584
Aileron Bearing



CA35636-100
Aileron Hinge



CA751-871
Fuel Bowl Gasket



CA26246-000
Fastener, Fuel Cap Cover Door



CA67026-011
Torque Link Bushing



CA63530-100
Trim Barrel



CA79072-000
Nose Gear Bumper



CA35328-800E
Fuel Pump

Continued from previous page

Piper

| Description | Part Number | Model |
|--|-------------------------------------|--|
| Shaft, Stabilator Trim Jack Screw | CA65246-002 | PA34-200,200T,220T |
| Stall Switch Assembly | CA450-742N | PA28-140,150,151,160,161,180,181,235,236,201T S/N 28-7921001 to 28-7921095, PA28R-180,200,201,201T, PA32-260,300,301,301T,PA32R-300,301,301T |
| Strut, Alternator Brace | CA78483-000 | PA28-150,160,180,235,PA28R-180,200 |
| Switch, LH Main Gear Down Limit | CA67411-002 | PA28R-180,200,201,201T,PA28RT-201,201T,PA32R-300,301,301T,PA32RT,PA34-200,200T,220T |
| Switch, Nose Gear Down Limit | CA67411-003 | PA28R-180,200,201,201T,PA28RT-201,201T |
| Switch, RH Main Gear Down Limit | CA67411-004 | PA28R-180,200,201,201T,PA28RT-201,201T,PA32R-300,301,301T,PA32RT,PA34-200,200T,220T |
| Switch, LH Main Gear Up Limit | CA67411-005 | PA28R-180,200,201,201T,PA28RT-201,201T,PA32R-300,301T,PA32RT,PA34-200,200T |
| Switch, Nose Gear Up Limit | CA67411-006 | PA28R-180,200,201,201T,PA28RT-201,201T,PA32R-300,301,301T,PA32RT |
| Switch, RH Main Gear Up Limit | CA67411-007 | PA28R-180,200,201,201T,PA28RT-201,201T,PA32R-300,301,301T,PA32RT,PA34-200 |
| Switch, LH Main Gear Squat | CA67411-008 | PA28R-180,200,201,201T,PA28RT-201,201T,PA32R-300,301,301T,PA32RT,PA34-200,200T |
| Switch, RH Main Gear Up Limit & Ground Op. Fan | CA67411-020 | PA34-200T |
| Switch, Nose Gear Down Limit | CA67411-021 | PA32R-300,301,301T,PA32RT |
| Swivel Fitting, Cable Attach | CA95232-000 | PA34-200,200T |
| Swivel Fitting, Stud Cable Attach | CA70371-002 | PA18,PA18-150,PA22,PA23-150,160,235,250,PA24-180,250,260,400,PA25-150,235,260 |
| Swivel Fitting, Cable Attach | U70371-000 | PA28-140,150,151,160,161,180,181,201T,235,236,PA28R-180,200,201,201T,PA28RT-201,201T, PA30, PA30,39, PA31-300,310,325,350,PA31-350,T1020,PA31T,1,2,PA31P,PA32-260,300,301,301T,PA32R-300,301,301T, PA32RT,PA34-200,200T,220T,PA36-285,300,375,PA38,PA42, PA42-720,1000,PA44-180,PA46, PA46-310P,350P |
| Transducer, Fuel Pressure | CA486-439 | J3, J5A, J5A-80, J5C(S/N5-784 & UP), PA12,PA12S,PA14,PA24,PA24-250,PA25,PA25-235,260, PA28-140 (TO S/N 28-24999),150,160,180 (TO S/N 28-43771), PA28-235 (TO S/N 11039) |
| Transducer, Oil Pressure | CA486-440 | PA28-181 S/N 2843001 thru 2843027 and 2890206 and up if electric fuel pressure sender is installed. PA38-112, PA-44-180 |
| Tube, Nose Gear Strut Inner Lower | CA65280-000 | PA38-112 |
| Universal Joint, Control Wheel Shaft | CA46203-002 | PA28-140,150,151,160,161,180,181,235,236,PA32-260,300 |
| Universal Joint, Control Wheel Shaft | CA62834-802SS | PA31-300,310,325,350,350-T1020,31P-350,31T,31T1,31T2 |
| Wiper Strip | CA187-625 | PA28-140,150,151,160,161,180,181,235,236,PA28R-180,200,201,201T, PA32-260,300,301T,PA32R-300,301,301T,PA32S-300,PA34-200,200T,220T |
| Pratt & Whitney | | |
| Bearing, Rod End | CG3011587 | PA-22, PA-22-108,135,150,160, PA-23, PA-23-160,235,250, PA-24, PA-24-250,260,400, PA28-140,150,151,160,161, 180,181,235,236, PA-30, PA-39, PA-32-260,300,301FT,301XTC,301,301T |
| Fuel Transfer Tube | CA3011155 CA3020030 | See page 253 |
| Diaphragm | CA3103346-01 CA3103347-01 | See page 253 |
| Gasket | CA3118962-01 | See page 253 |
| Gasket Fuel Manifold | CA3101469-01 | See page 253 |
| Gasket Fuel Nozzle | CA3029566 CA3029678 MS9371-16 | See page 253 |
| Retainer Plate | CA3103345-01 | See page 253 |
| Shim, Prop Shaft | CA3110998-01 | See page 253 |
| SAAB | | |
| Bushing | CAIR130986 CAIR130988 | 340 Series S/N 004 thru 999 |

